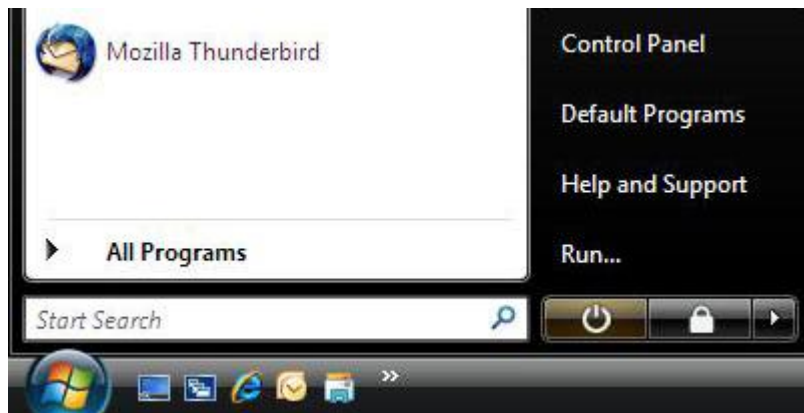


# Setting up a PPPoE connection on Windows Vista

This tutorial will guide you through setting up a PPPoE connection on Windows Vista. See [Setting up a PPPoE connection](#) for help with other operating systems.

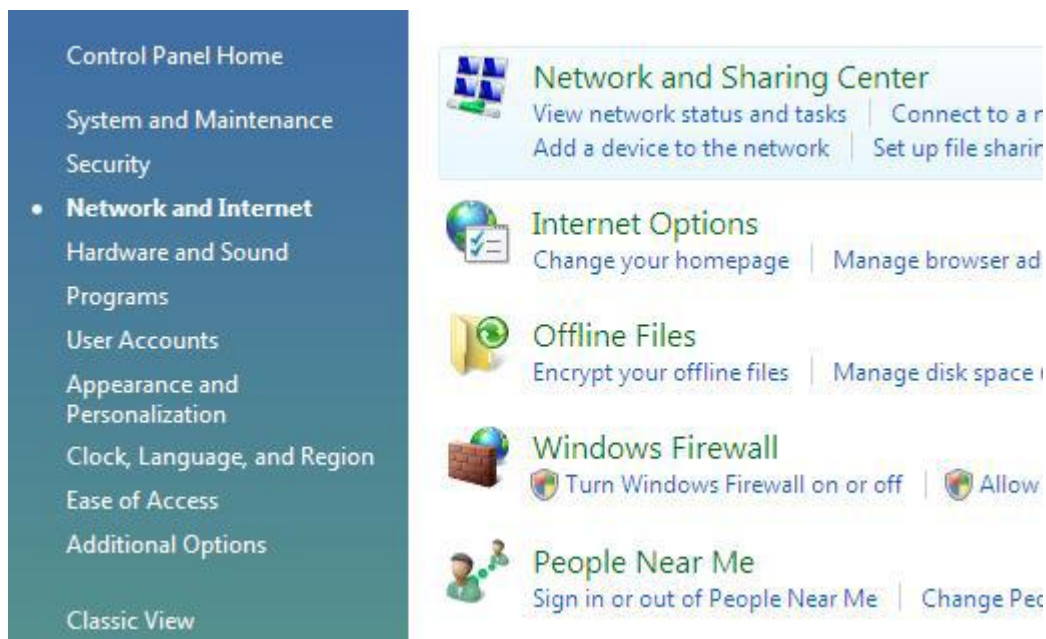
Click on the "Start" menu and then go to "Control Panel".



In the Control Panel select "Network and Internet".



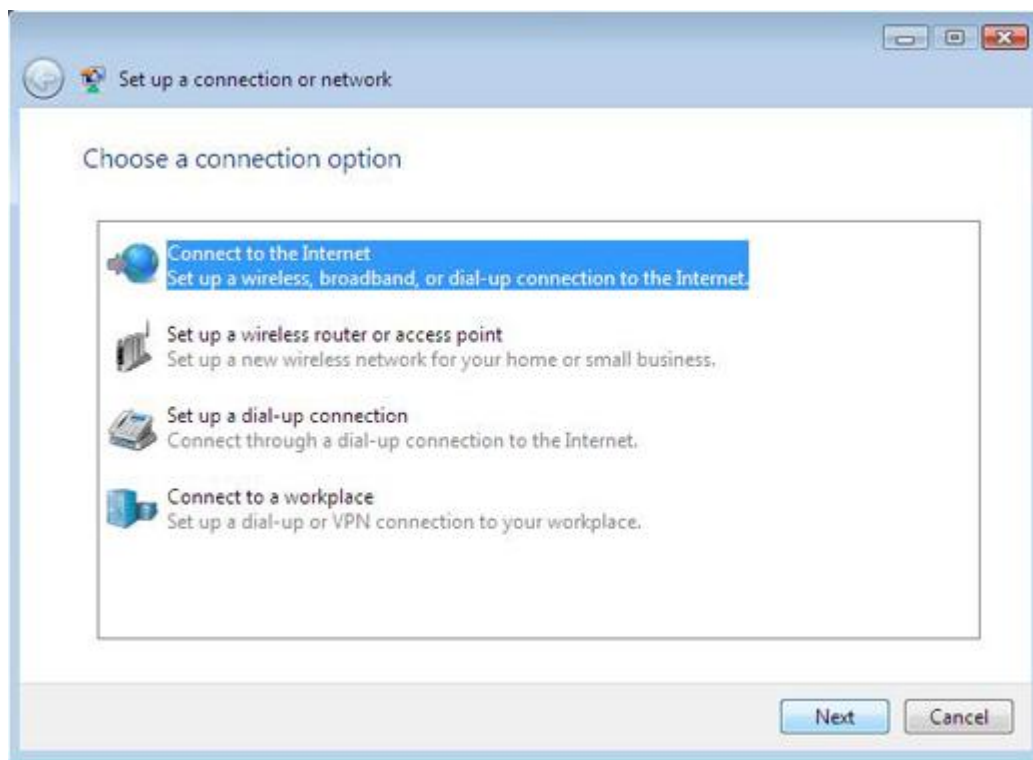
Once in the Network and Internet category, double-click "Network and Sharing Center".



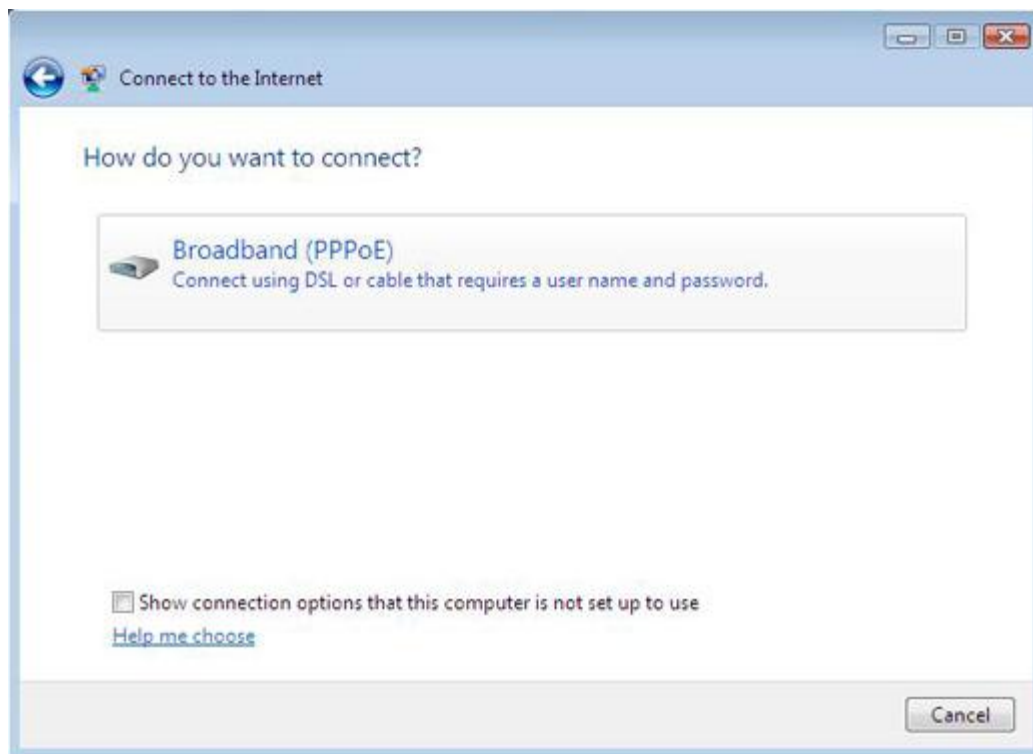
The Network and Sharing Center gives you an overview of the network status of your computer. To set up the connection, click "Set up a connection or network".



Select "Connect to the Internet" and click "Next".



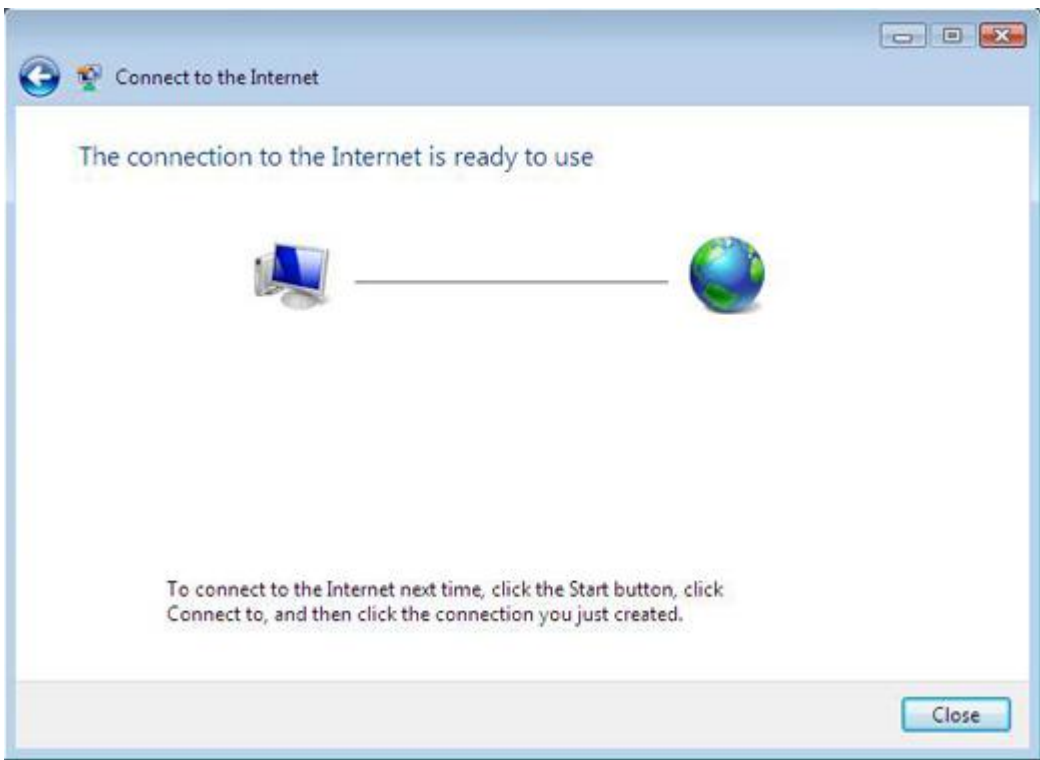
We want to connect using "Broadband (PPPoE)" and not use any dialup methods.



Enter your username and password in the fields provided. You can use "Show Characters" to show the password as you type it. Once you have typed the password, untick this box to hide your password again. Click "Connect".



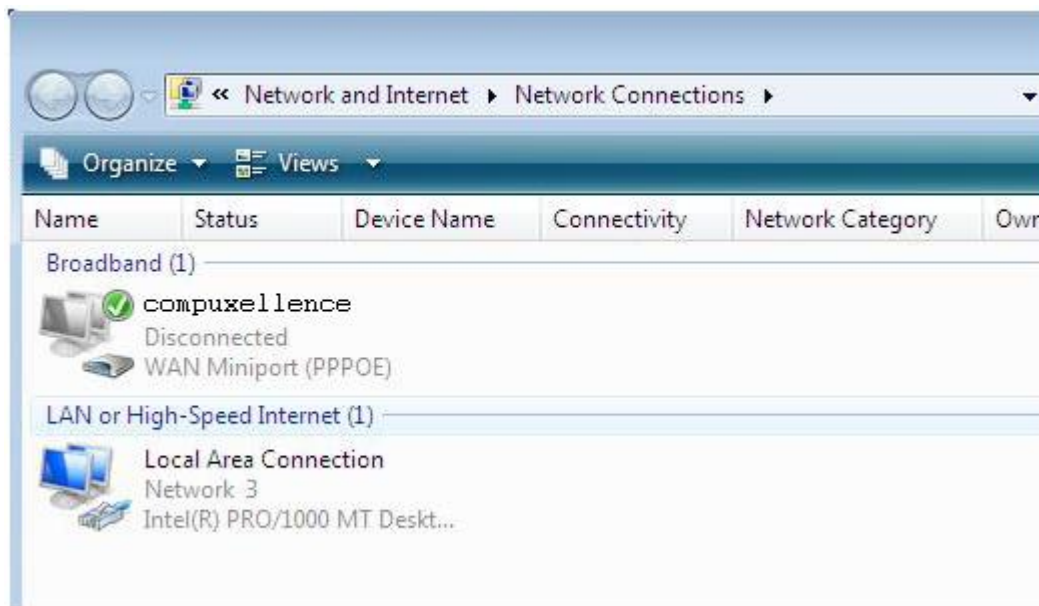
This will create the connection for you and make it ready to use. Click "Close" to continue.



You will be returned to the Network and Sharing Center. To activate the connection, click on "Manage network connections".



Under "Broadband" you will see the connection. Double-click it to activate the connection window.



Click "Connect" to connect to the Internet.

