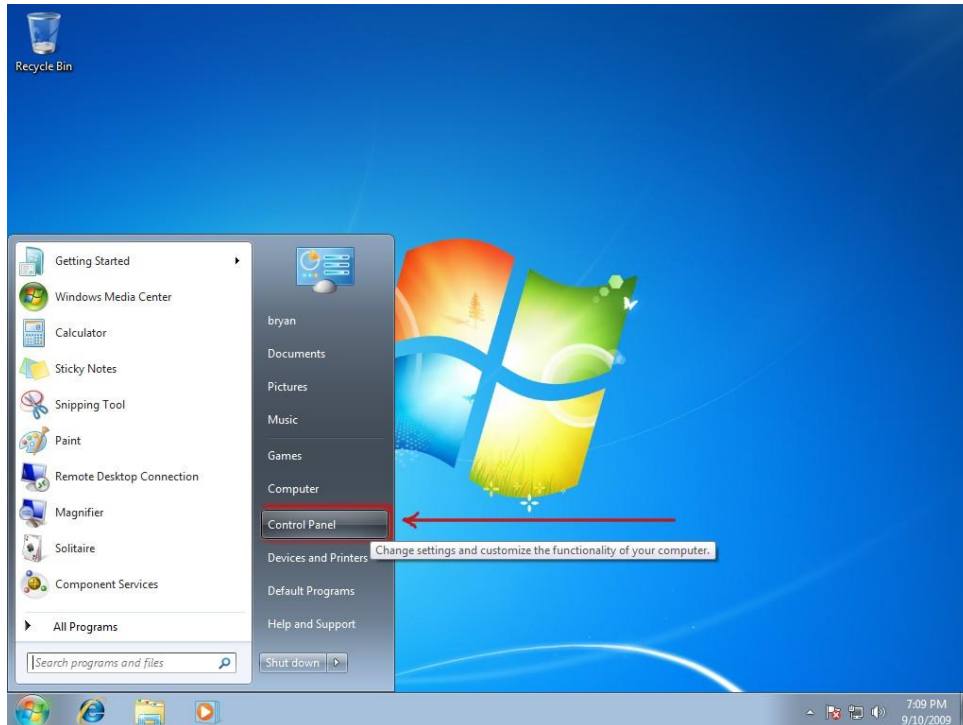


[How to configure PPPoE internet connection in Windows 7](#)

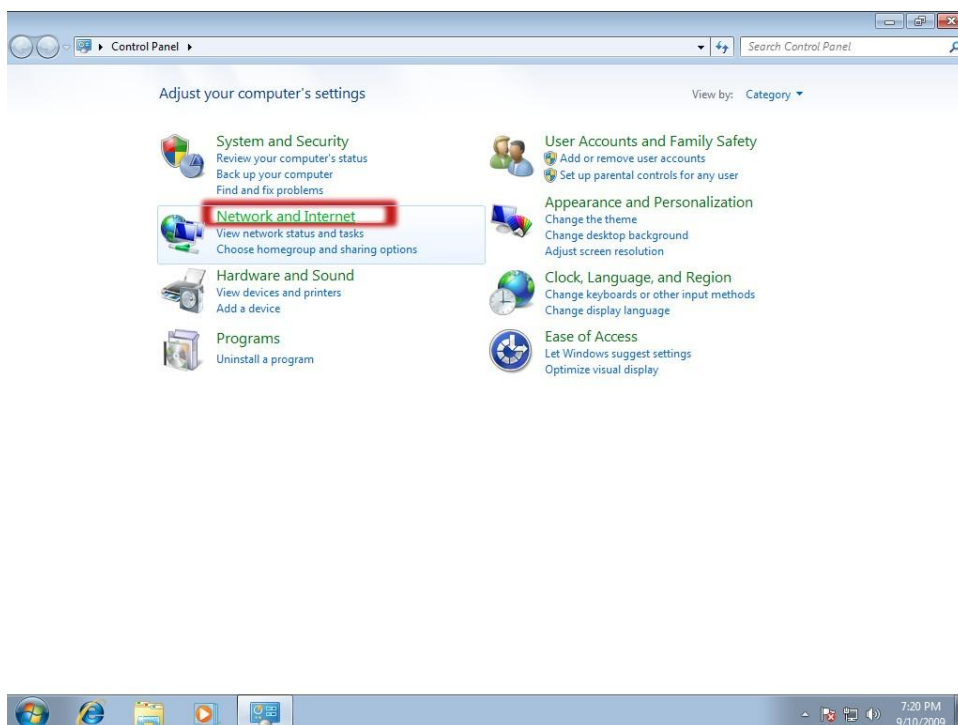
Windows 7 will be released on October and many people may expect that can bring some new features or performance for user, i have to tell you that it's correct Microsoft enhance performance improvement in **Windows 7** no matter in file transfer or application using.

However, the purpose of this article is not talking about performance or new features of **Windows 7**, that is tech you how to configure **PPPoE** Internet connection in **Windows 7**, these steps you can follow as below procedure.

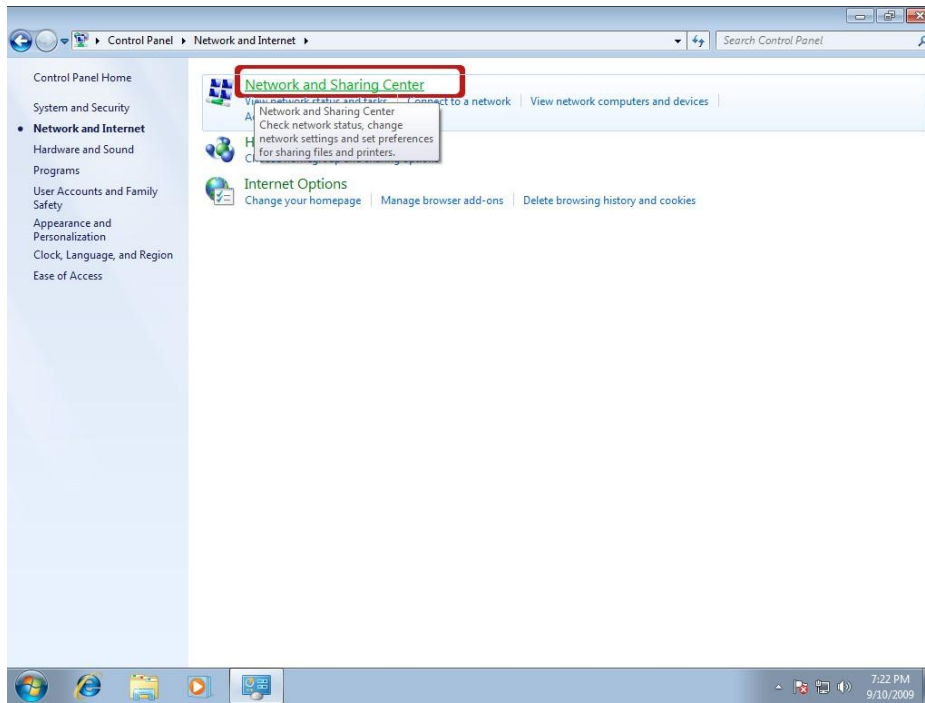
1. First, you need to select **Start -> Control Panel**



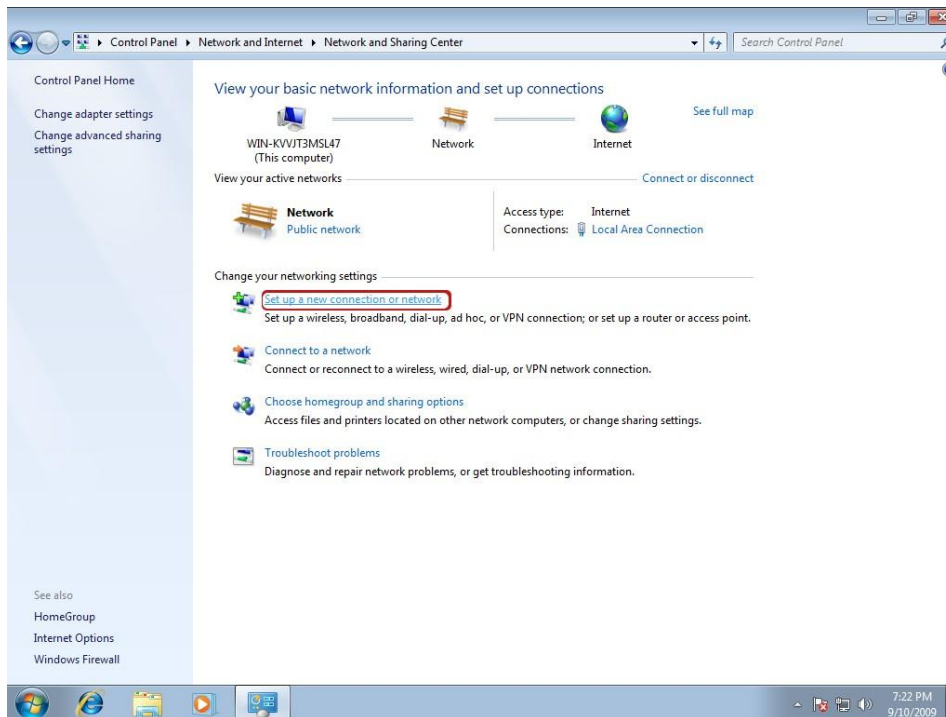
2. You only need to click **Network and Internet** for entry next settings at this time



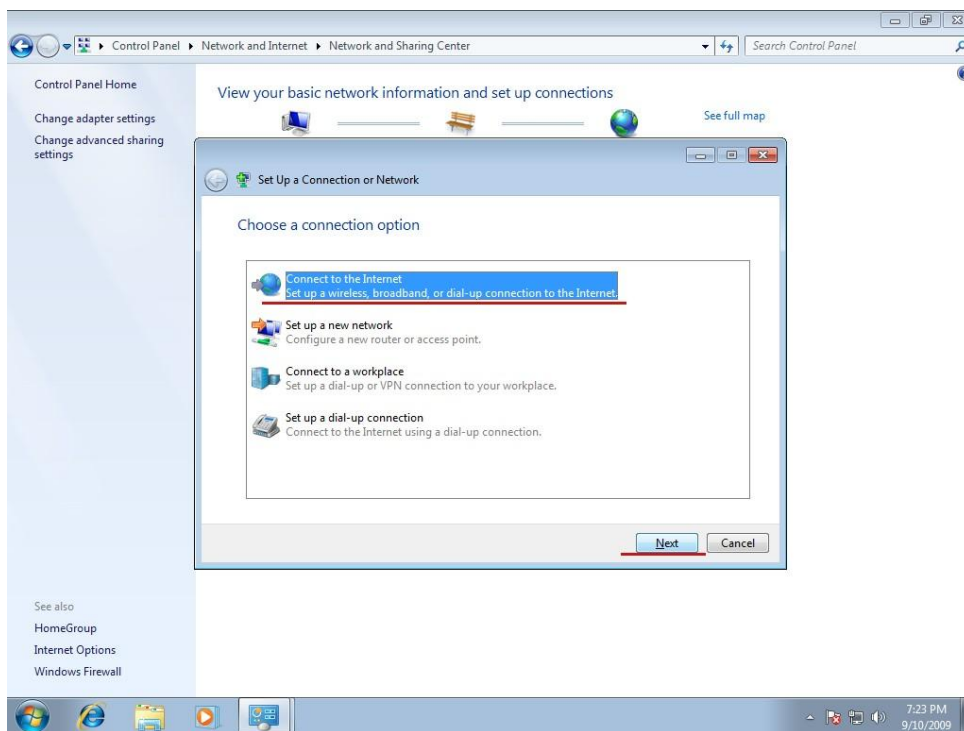
3. Please click **Network and Sharing Center** right now



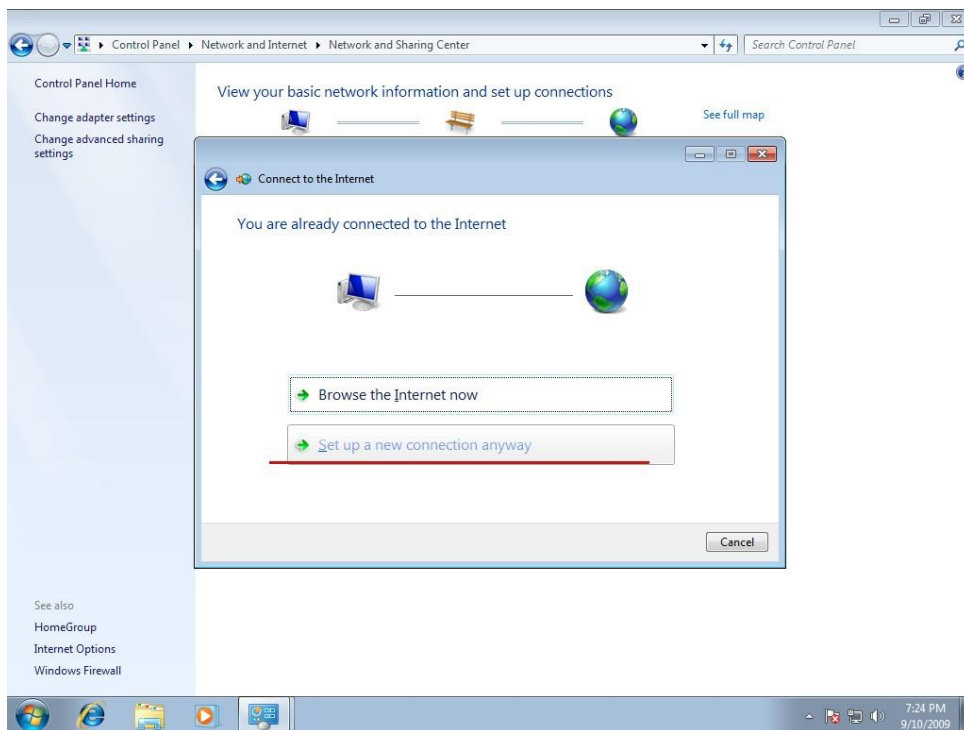
4. In this step, please click **Set up a new connection or network** in **Change your network settings** sector



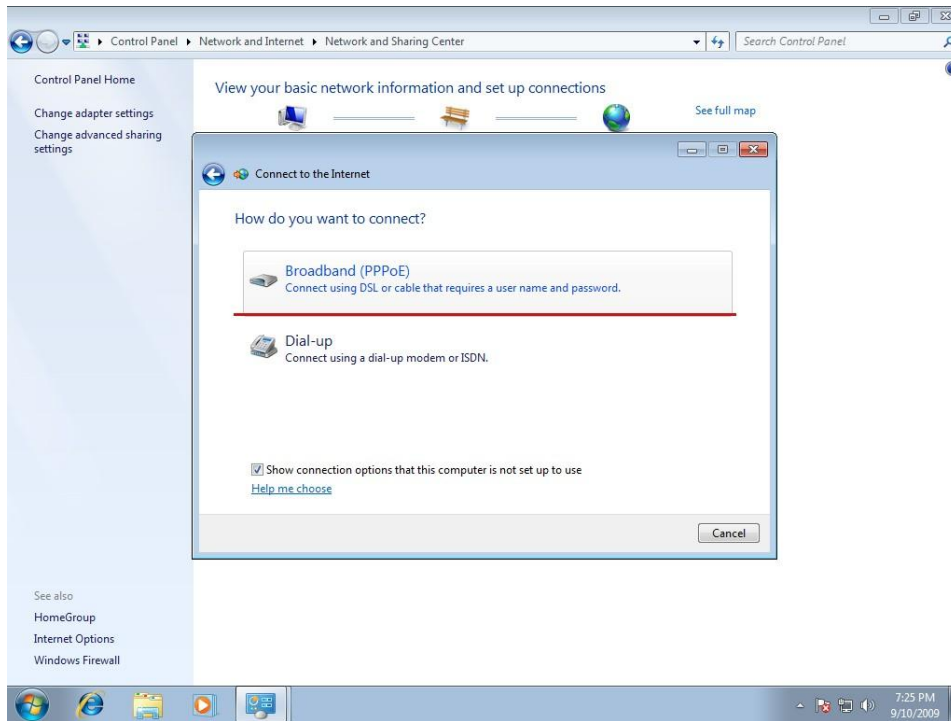
5. During this time a pop-up window will be shown and click **Connect to the Internet** then click **Next** button



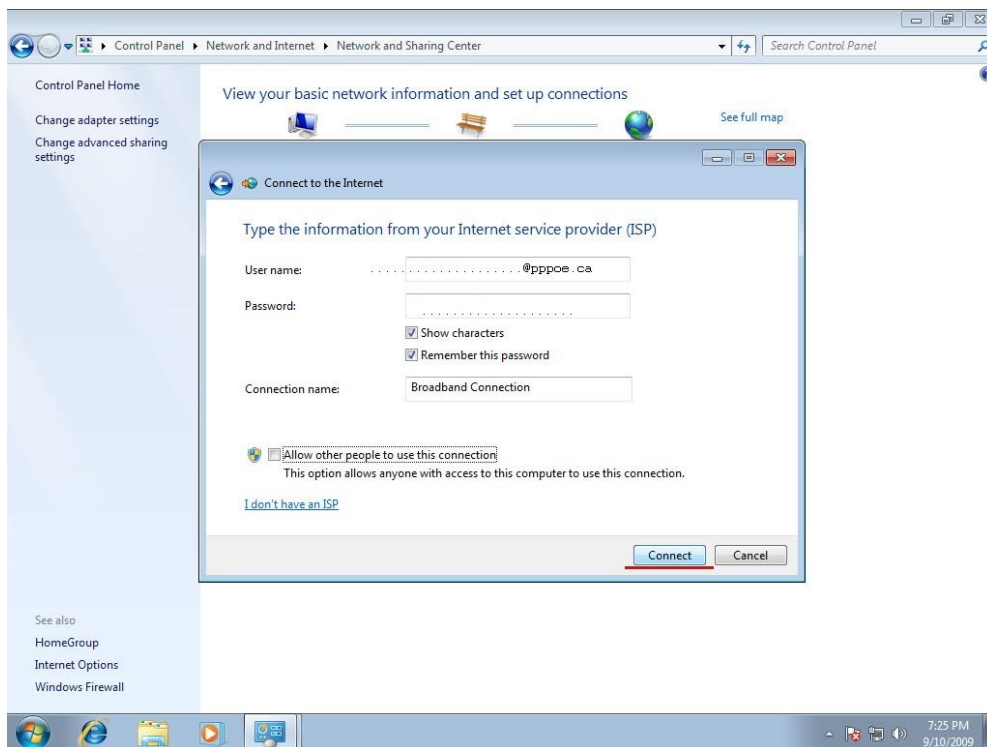
6. Someone may be using Broadband router to share Internet connection for many computers, so they can connection to Internet in this while, if you can connect to Internet right now, please click **Set up a new connection anyway**



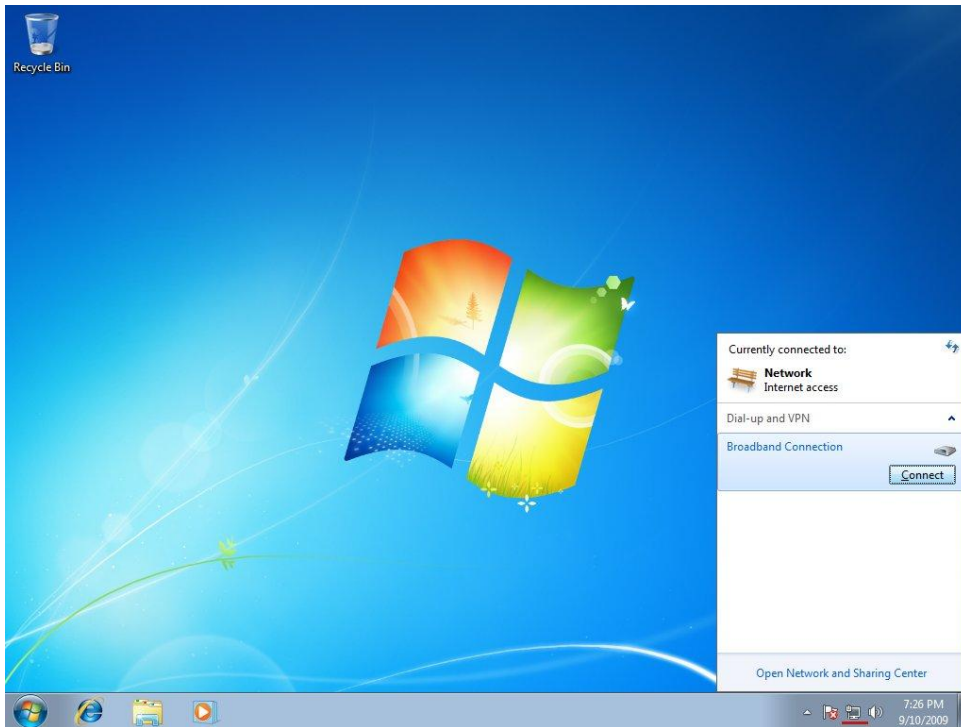
7. Please click **Broadband(PPPoE)**



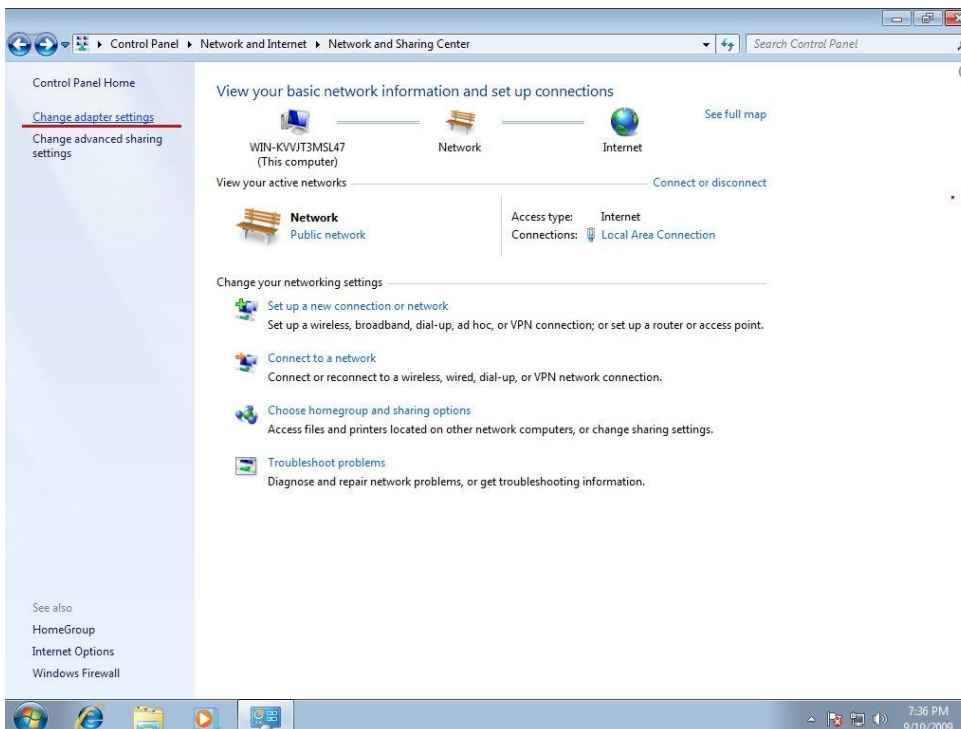
8. Now, please fill out your account information that provided by ISP and then click **Connect**



9. If your connection has been established, then you will be able to see this well-established connection through the bottom right corner click on the **Network internet access** icon.



10. Sometimes you want to modify this connection profile, please click **Change adapter settings** after select **Control Panel -> Network and Internet -> Network and Sharing Center**



11. Here you can see the **Broadband Connection** profile

